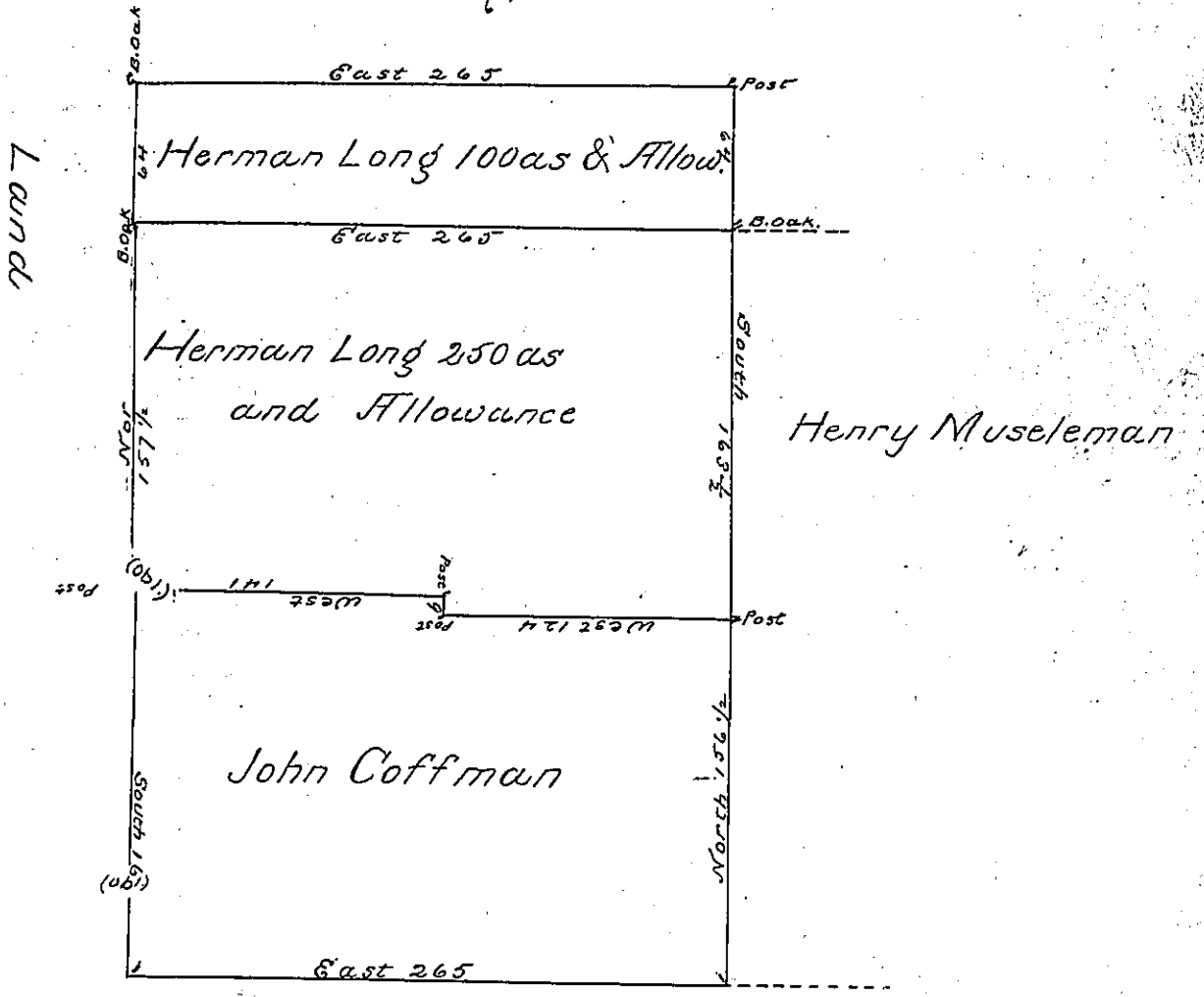


a-83-9

Account



221.5
 265

 1107.5
 13296
 4430

 58697.5
 744

 59441 (371 1/2)
 112

124
 6

 744

see pg 210

Herman Long 100 acres Situate in Hempfield Township in Lancaster County Surveyed by Consent of the Commissioners of Property the 23d. of October 1729. And 250 ac adjoining pt. of 500 ac. Laid out to Michael Coffman's Children as p Rets. in the office.

Jno. Taylor

This tract of 250 ac was Returned to. on the 19th. of Augt. 1737 in pursuance of another Warrt. dated ye 29th. of S. M. 1737 the above desculed 100 ac together with the the a found. 250 was returned to. to Herman Long the 9th of December 1737.

John Coffman's 250 ac the survey recd. into my office ~~the~~ in pursuance of a Warrt. from the Propis. dated the 18th. of August 1737 & returned into the Secretarys office the 19th. of the same month.

IN TESTIMONY that the above is a copy of the original remaining on file in the Department of Internal Affairs of Pennsylvania, made conformably to an Act of Assembly approved the 16th day of February, 1833, I have hereunto set my Hand and caused the Seal of said Department to be affixed at Harrisburg, this third day of July 1920

James W. Fetta
Secretary of Internal Affairs